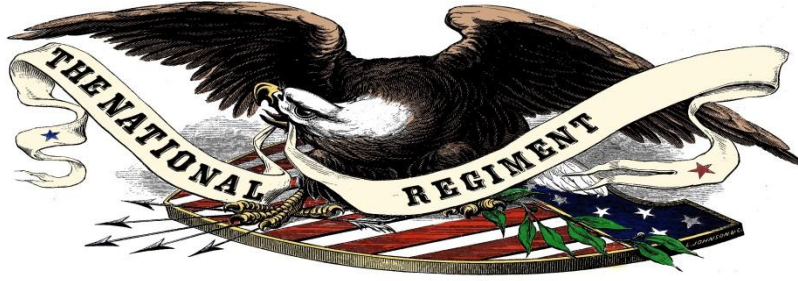


# “THE REGIMENTAL”



## THE NEWSLETTER OF THE NATIONAL REGIMENT

July, 2016

### Commander's Corner

I should like to commend all members of the NR who participated in the June events both in Virginia and Canada. It was an odd situation for us in that, on the same weekend, we had 2 events which were non-NR but were largely supported by NR personnel. Even though the climatological conditions and other event factors could not have been more different, from all reports I received the Southern Expeditionary Force performed up to the highest standards of our organization, and I can say from personal observation the Northern Expeditionary Force did the same. Well done to all concerned.

Even though we maintained the reputation of the National Regiment on an international level, I hope we may never again be faced with that situation. We are at our utmost best when we are able to perform as one UNITED entity.

Our next event should provide us with that opportunity, the 155<sup>th</sup> Anniversary of the Battle of Bull Run at Cedar Creek. The Order of Battle and area map are below, as is more specific information. We all know this will in all probability be a hot one, so I expect everyone to take all precautions to deal with the elements.

Have a safe trip, and I'll see you all in hell. (Or Virginia, which is the next best thing.)

### 155<sup>th</sup> Anniversary of the Battle of Bull Run at Cedar Creek

If you still wish to go to Bull Run at Cedar Creek the link to registration is below. Remortgage your house and sign up, it'll be fun.

[http://ccbf.us/?page\\_id=2271](http://ccbf.us/?page_id=2271)

If you are registered for the event, here are a couple of tips.

As you can see by the map, our camps are in a different place than they usually are.

#### **IF YOU ARE PREREGISTERED:**

As you go South on I81, go **PAST** Exit 302 Middletown (the one we usually get off at).

Go to **Exit 298 Strasburg, US Rt. 11**. Turn RIGHT (North) on Rt. 11. Take that about 2 miles to Rt. 727, Belle Grove Road. Turn LEFT onto Bell Grove Rd. and follow that to Reenactor Check in.

IF YOU HAVE **NOT** PREREGISTERED YOU MUST GO TO REGISTRATION WHICH WILL BE SET UP AT THE CEDAR CREEK BATTLEFIELD FOUNDATION HQ ON RT. 11 WHERE WE USUALLY REGISTER.

To ease congestion on Sunday when we leave we will not be permitted to turn LEFT onto US 11 to Middletown. ALL traffic from the Federal camps will be diverted RIGHT (SOUTH) toward Strasburg where we can pick up I81 and head back north to God's Country.

Also, as you can see by the camp layout, there will be precious little shade. I STRONGLY URGE each combined company to arrange to have a fly for shade.

N.B. No vehicles will be permitted into camp until after the end of the battle on Sunday.

**Drink plenty of water!**

**National Regiment Order of Battle  
Bull Run at Cedar Creek  
July 22, 23, 24, 2016**

**ELF Company Carlson, App, Thomas**

<u>1<sup>st</sup> MD</u>	<b>6</b>
<u>3<sup>rd</sup> MD</u>	<b>12</b>
<u>7<sup>th</sup> PA</u>	<b><u>6</u></b>
<b>TOTAL</b>	<b>24</b>

**Leftover Company Betley**

<u>2<sup>nd</sup> US</u>	<b>2</b>
<u>4<sup>th</sup> US</u>	<b>3</b>
<u>8<sup>th</sup> OH</u>	<b>3</b>
<u>9<sup>th</sup> PA</u>	<b>1</b>
<u>119<sup>th</sup> NY</u>	<b><u>4</u></b>
<b>TOTAL</b>	<b>13</b>

**Bully Boys Company Martinello, Parvis**

<u>1<sup>st</sup> PA Co. K</u>	<b>11</b>
<u>5<sup>th</sup> NH</u>	<b>0 (1 officer)</b>
<u>6<sup>th</sup> NH</u>	<b>4</b>
<u>14<sup>th</sup> CT</u>	<b><u>5</u></b>
<b>TOTAL:</b>	<b>20</b>

**REGIMENTAL STAFF**

Col. Downes  
Lt. Col. Adler  
Adj. Lt. McNierney  
Sgt. Major Cronin

**BATTALION TOTAL 63 Officers and men line, 4 Staff= 67**

**BRIGADE STAFF)**

Gen. Brennan  
M. McNeirney  
B. Zech  
C. Sedlak

# **National Regiment Early War Impression**

## **FIRST BULL RUN**

### **Headwear:**

**PREFERRED:** Hardee Hat, Kepi, Type 1 Forage Cap

**ACCEPTABLE:** Type 2 Forage Cap, Havelock, Slouch Hat for off duty/camp wear

Be free with the brass :-)

### **Trousers:**

**PREFERRED:** Dark Blue Trousers

**ACCEPTABLE:** December 1861 issue: Sky Blue Trousers

### **Blouse:**

**PREFERRED :** Frock Coat

**ACCEPTABLE:** Sack Coat

### **Shirt:**

Civilian or Army Issue Shirt

### **Vest:**

**PREFERRED:** No waistcoat on enlisted men

**ACCEPTABLE:** Civilian if you must, military if that's all you've got.

(Why would you want to wear a waistcoat?)

### **Brogans or Boots:**

Proper period US issue

### **Knapsack –**

They marched heavy.

**PREFERRED:** Early war single bag or hard frame

**ACCEPTABLE:** 2 bag soft

### **Bayonet Scabbard:**

**PREFERRED:** Two Rivet Bayonet Scabbard

**ACCEPTABLE:** Seven Rivet

### **Rifle and Leathers:**

**PREFERRED: 1842, 1855, 1861 Springfield Musket**

**ACCEPTABLE: P1853 Enfield 1863 Springfield**

**PREFERRED: Early waist belt w/ leather or no keeper - puppy paws buckle.**

**ACCEPTABLE: Mid War waist belt w/ brass keeper**

**1850 Issue Cap Pouch**

**1861 Issue Cartridge Box**

### **Haversack**

**Regulation blackened**

### **Canteens:**

**PREFERRED: Dark Blue or Brown covers, smooth side, leather strap, no chain**

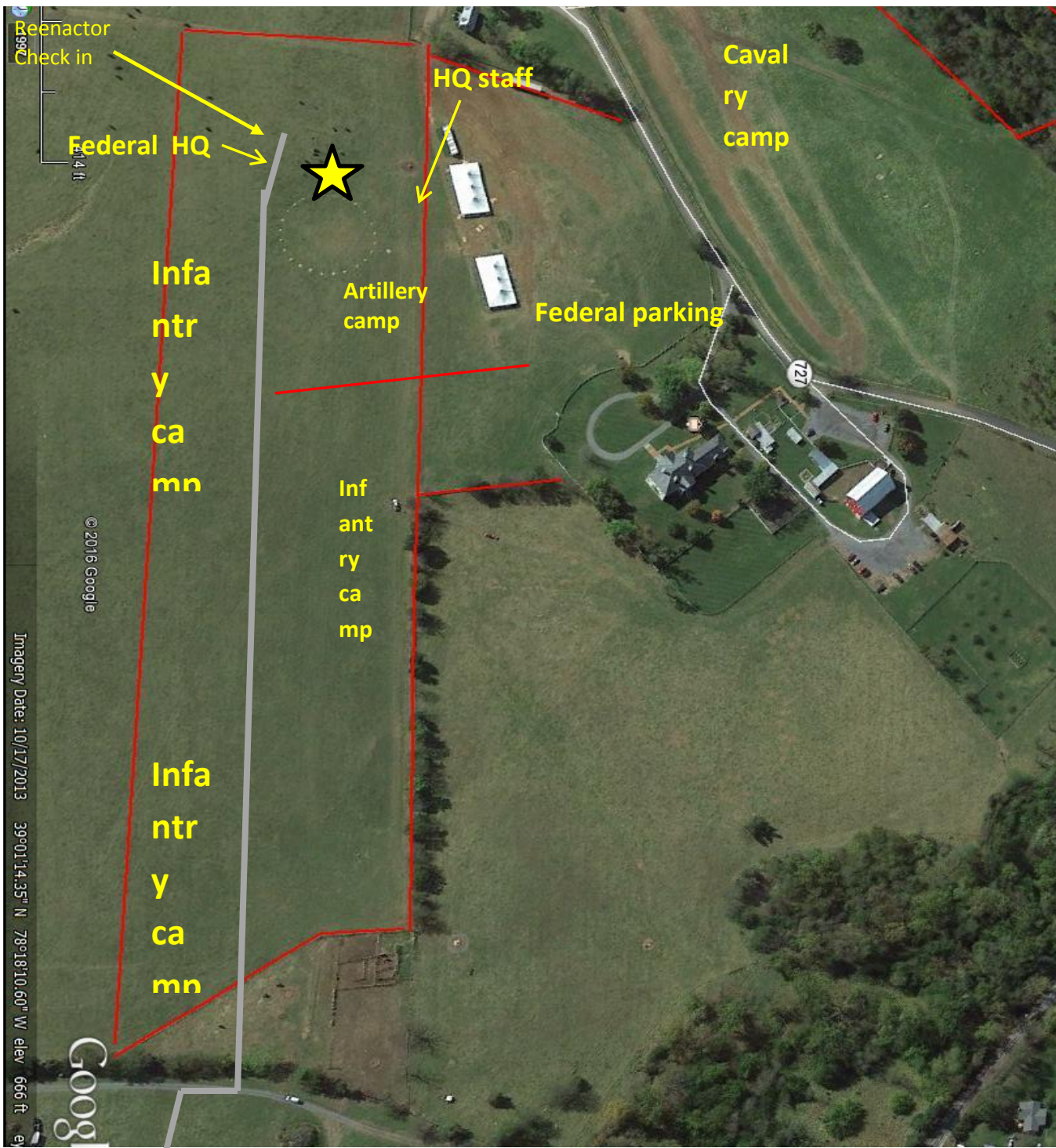
**ACCEPTABLE: Any proper period Federal canteen, cover and strap, early or mid-war**

### **Tents**

**PREFERRED: Wall or "A" tents for officers, "A" tents for enlisted men**

**ACCEPTABLE: Dog tents**

**We realize dog tents had not been invented yet, but we appreciate that that is the only tentage many of you have, therefore they will be acceptable for this event.**



**155th Anniversary Reenactment of 1st Bull Run  
July 22-24, 2016  
Schedule of Events/Military**

**Friday, July 22nd**

4:00 PM Gates open to public

**6:00 PM – Formation of troops – (Field)**

**7:00 PM – Reenactment: Battle of Rich Mountain – (Field)**

8:00 PM – Firing of cannon & Signal Corps Demonstration – (Field)

9:00 PM Gates close to the public

---

**Saturday, July 23rd**

9:00 AM Gates open to public

11:00 AM – Infantry demonstration – (Field)

1:00 PM – Cavalry demonstration – (Field)

2:00 PM – Artillery demonstration – (Field)

3:00 PM Spectators must leave reenactor camps

**3:30 PM – Formation of troops – (Field)**

**4:00 PM – Reenactment: Battle of 1st Bull Run (1st Manassas) – (Field)**

*Action at Blackburn's Ford*

7:00 PM – Evening Guided Tour of Civil War Camps and interaction with troops in camp settings.-

8:00 PM Gates close to public

*(8:00 – 11 00 PM) (Reenactor's Ball is closed to the public)*

*(2nd South Carolina String Band)*

---

**Sunday, July 24th**

9:00 AM – Gates open to Public

9:00 AM – Catholic Mass Service – (Symposium Tent)

10:00 AM – Non-Denomination Gospel Service – (Symposium Tent)

11:00 AM – 46th Pennsylvania Regimental Band Concert – (Symposium Tent)

12:00 PM – All Spectators must leave Camps

**12:30 PM – Formation of troops – (Field)**

**1:00 PM – Reenactment: Battle of 1st Manassas (1st Bull Run) – (Field)**

*Action of Matthews and Henry House Hill*

5:00 PM – Gates close to the public

***Please note that all times and events are subject to change.***